



BRANCH
GALLERY

FOR
THE
FIBER
ARTS

FOR IMMEDIATE RELEASE

October 2016

Branch Gallery

1031 W. Manchester Blvd

Inglewood, CA 90301

Media Contact: Aneesa Shami

Email: aneesa@theknittingtreela.com



© Leaf Art - Fire on Ice
18 x 20 x 13 inches
3D sculpture,
wood base

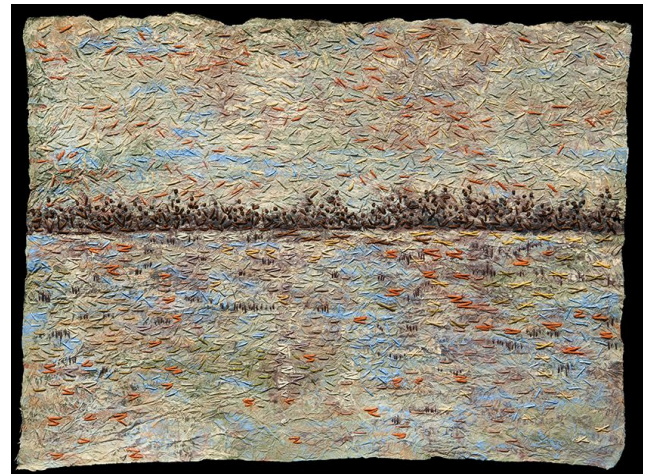
Smadar Knobler, *Fire on Ice*

Branching Out

Surface Art Association Exhibition

November 12-December 4, 2016

Reception: November 12, 3pm to 7pm



Mary Beth Schwartzenberger, *Sunrise Sunset*

Inglewood, CA - Branch Gallery is excited to announce their upcoming exhibition, *Branching Out*, which features work from the Surface Art Association (SAA). The SAA includes local artists who work in a variety of media with a primary focus on the creative use, alteration and embellishment of fiber and textile surfaces. Such processes include weaving, painting on fiber and textile surfaces, sculpture, and mixed media. Artists exhibiting are Mia Bloom, Celeste Covas, Maureen Cox, Cicely Gilman, Guila Greer, Leone Keegan, Smadar Knobler, Trish Lange, Dassi Pintar, Mary Beth Schwartzenberger, Diana Shore, Sandra Sigal, Linda Stone, Earlene Weiss, and Barbara Weitekamp.

Branching Out is inspired by the SAA theme challenge for 2016. The themed challenge encourages SAA artists to interpret and express each year's theme in their own way. As a result, there is a variety of imagery in the exhibition, including subjects of nature, interpersonal connections, creative exploration and innovation, personal growth, and family journey. Many of the artists used cloth, paper, plastic, metal, and repurposed material to create their work.

There will also be a boutique on site, including scarves, jewelry, small quilts, among other handmade, one-of-a-kind objects.

MORE

About Branch Gallery

Branch Gallery is a fiber-based art space in Los Angeles. The gallery emphasizes both exhibition and education in its 1500 square feet of multifaceted space. Providing opportunities exclusively for the fiber arts, Branch Gallery allows fiber artists to share their work and techniques with the broader Los Angeles arts community. Bringing more attention to fiber as a fine art, along with its presence as a craft, will inspire others to create their own tactile fiber experiences. Inglewood has become known for its vibrant arts district and budding arts scene (as reflected in [this](#) New York Times article and [this](#) LA Business Journal Article).

The Branch Gallery is a project of The Knitting Tree, L.A., a fiber retail space recently relocated to Los Angeles' Inglewood.

thebranchgallery.com



Guila Greer, *Park in Winter*

About The Knitting Tree, L.A.

The Knitting Tree, L.A. is Inglewood's local sanctuary for fiber arts enthusiasts of all skill levels. We offer an extensive selection of high-quality yarns and supplies for knitting, crochet, spinning, weaving, and needle felting, as well as hands-on instruction by skilled artisans of diverse backgrounds. Our passion is contagious, inspiring beginners to embrace new skills, while challenging more advanced fiber artists to expand their creative horizons.

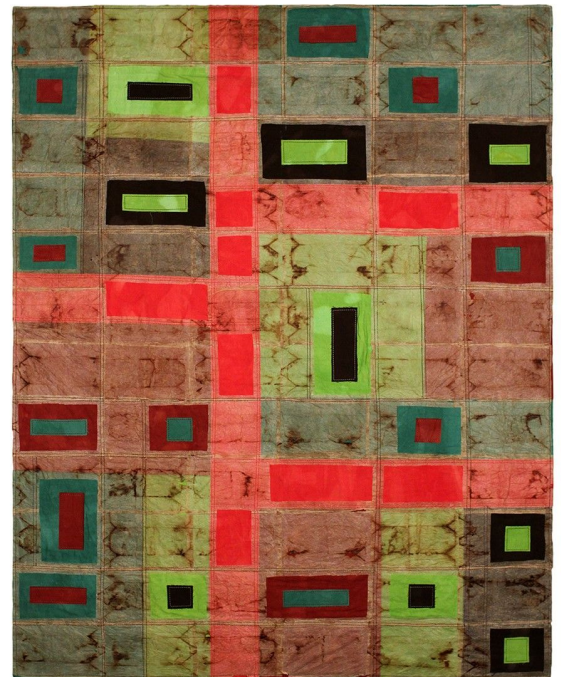
Fertile soil for yarn enthusiasts of all strands to "Grow Here"!

theknittingtreela.com

About Surface Art Association

SAA is a Southern California-based group that began in 2005, when a group of silk artists decided to expand the membership to include all types of fiber artists. Our organization is open to anyone with a passion for fiber art. We strive to inspire creativity and encourage innovation to further the rich traditions of textile and surface art.

surfaceartassociation.com



Mia Bloom, *Underneath*

END